

EST. 1838

C.O. BIGELOW  
INC.

D  
R  
U  
G  
S

Bigelow

C.O. Bigelow & Lewis, Est. 1838



Honest, Genuine, Trustworthy.

Nestled in the tiny neighborhood of Greenwich Village in New York City, C.O. Bigelow is the landmark apothecary that has been a fixture of New York City culture since 1838.

For nearly two centuries, Bigelow has been a destination for the Country's most prominent personalities, from Thomas Edison and Eleanor Roosevelt to modern film stars and esteemed writers, musicians, and artists.

Inspired by actual formularies and therapeutic ingredients from our archives, C.O. Bigelow's personal care products combine centuries-old, proven formulas with modern remedies sourced globally. In keeping with our longstanding mantra of "Honest, Genuine, and Trustworthy," the line is an authentic range of problem-solution formulas with a heritage of efficacy. Many of the products are not only true to the original formularies but also named for the doctors who created them or the patients for whom they were initially made, continuing to tell a story of C.O. Bigelow's apothecary tradition.





RUBBER  
GOODS

ROOM  
DESCRIPTIONS

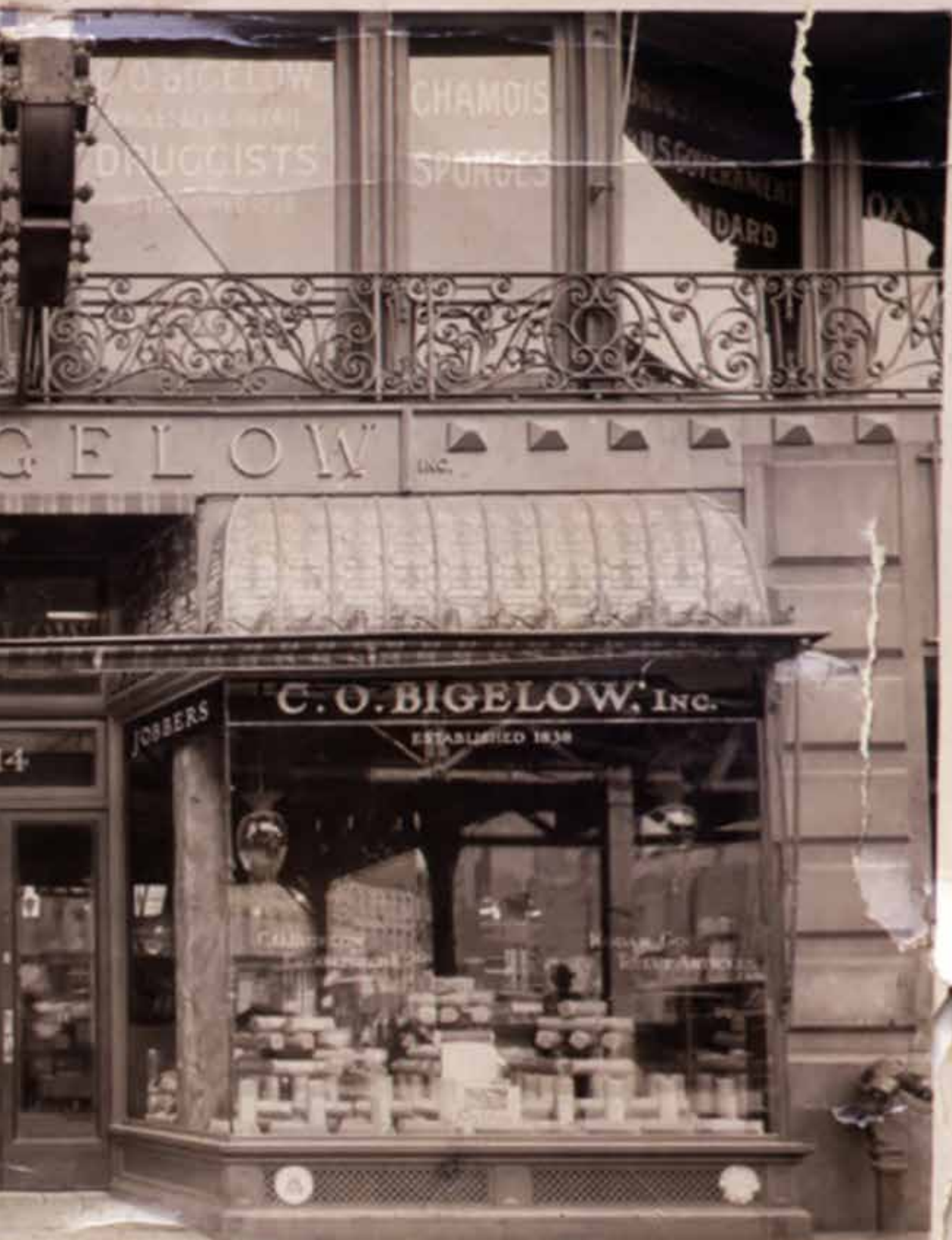
C. O. BIGELOW

C. O. BIGELOW, INC.

ESTABLISHED 1838

IMPORTERS

41



C. O. BIGELOW  
DRUGGISTS

CHAMOIS  
SPONGES

U.S. GOVERNMENT  
STANDARD

BIGELOW

INC.

C. O. BIGELOW, INC.

ESTABLISHED 1838

JOBBERS